

The Eco Business Centre

**Welcome to your
new home**



About Us



Welcome to a workspace like no other.

The Eco Business Centre stands as the UK's first Passivhaus Plus collaborative workspace, setting a new standard in eco-friendly and innovative office environments. We place community at the heart of everything we do, fostering a vibrant and dynamic atmosphere designed to propel your business to new heights.

Whether you're a startup, an established business, or somewhere in between, the Eco Business Centre offers the ideal office space tailored to your needs. Join us and experience a workspace where sustainability meets collaboration, and your business can truly thrive.



Powered by Town Square

A certified B Corp member, Town Square recognises that business is a source for good in the community. With a growing network of established spaces across the UK, Town Square are a driving catalyst of enterprise change. More than just spaces, they connect and empower individuals and organisations to grow.

**RIBA 2021
South
Sustainability
Award**



**RIBA 2021
South
Award**

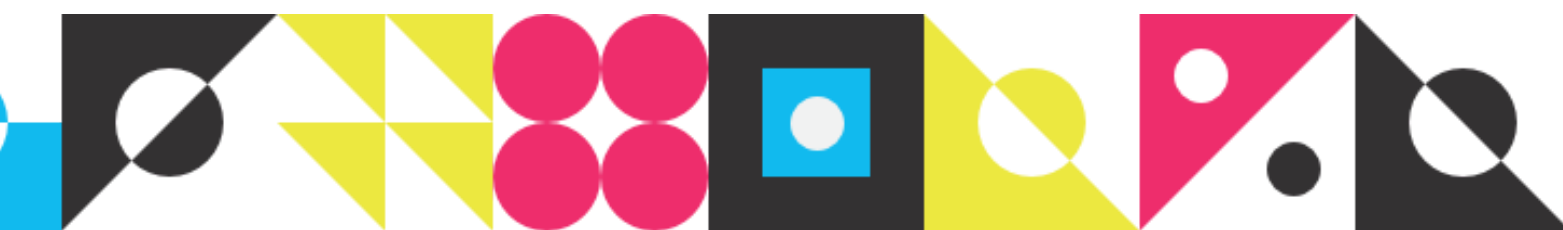


**BCO
National
Award 2022:
Projects up
to 1,500m2**

**An award-winning
workspace built for the
future that is nationally
acclaimed for its design
and environmental
credentials.**

- Amazing natural light and a natural ventilation system
- Rain water harvesting in the toilets to reduce water use
- Thermally efficient windows and insulated walls, floors and roof to reduce heat loss

- BREEAM Outstanding and Passivhaus Plus standard
- 143 photovoltaic cells which generate more energy than the building uses with the extra electricity exported back to the grid
- Good indoor air quality through the use of natural materials that do not give off Volatile Organic Compounds



The Eco Business Centre

Available offices



Elm Suite

300 SqFt

Our Elm Suite is located on the second floor. With dual aspect South and South West facing windows overlooking the fields towards Bucknell.



Willow Suite

250 SqFt

Our Willow Suite is located on the second floor. The South facing office overlooks the fields towards Bucknell.



Rowan Suite

500 SqFt

Our Rowan Suite is a dual aspect office on the first floor. The South East facing windows overlook the Elmsbrook estate and the fields towards Bucknell.

Flexible contracts



Whats included



Superfast wifi



Business address



Project and meeting
rooms



Direct access to the bus
and train network



Unlimited tea & coffee



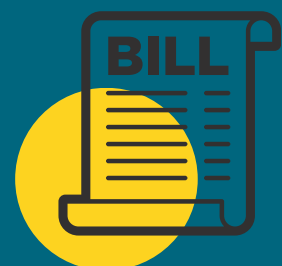
Business support



Printing



Networking events



**All bills
included***

*Excludes business rates



Dog friendly



Access to a kitchen



Access to admin support

More than just an award winning office space.

Meeting Rooms

Fully equipped meeting rooms for teams of up to 12. Members receive 20% discount on all bookings.

Networking & Events

Join our in person events and online members platform to connect with others.

Coworking Space

Shared desks and workspaces where people from different industries work alongside one another. A space to meet people and grow.

Business Support

Access to workshops, events, surgeries and resources to help you grow.

Admin Support

Access a range of additional administration support, including call answering and bookkeeping.



percheco.co.uk

01869 208 220 | bicester@townsq.co.uk

The Eco Business Centre

| Charlotte Avenue | Bicester
| OX27 8BL



TownSq



BOOK A TOUR HERE • BOOK A TOUR HERE